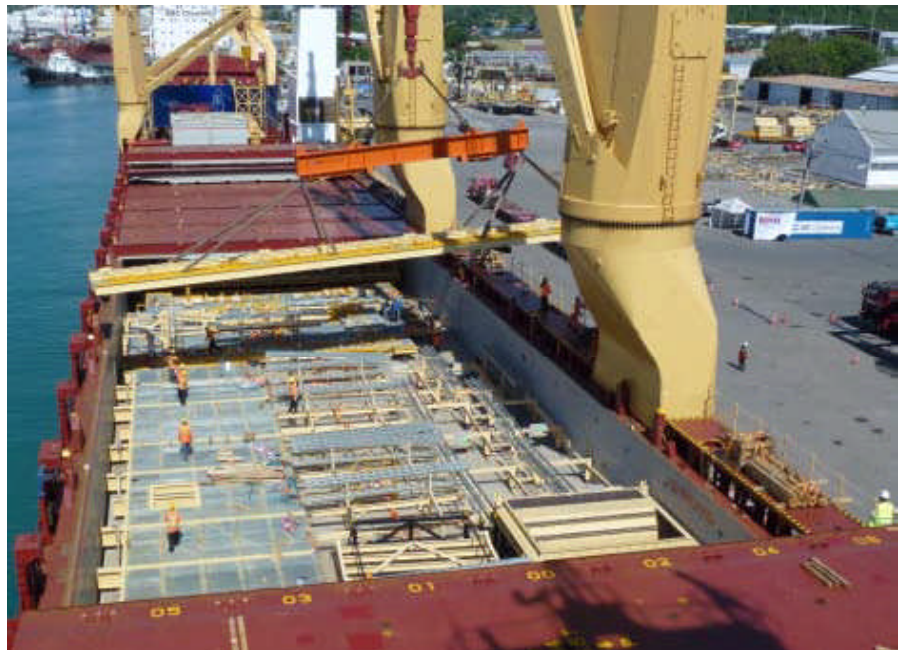


## BBC CHARTERING SHIPS 7 SHIPSLOADS PROJECT EQUIPMENT FROM SATTAHIP TO PORT HEDLAND

**BBC Chartering** was contracted by **NMT International (Australia)** to ship a large volume of project equipment from Sattahip to Port Hedland in Australia, in total the cargo was to be shipped with 7 **BBC** vessels, the 6<sup>th</sup> vessel in the row which was loaded in Sattahip (Thailand) was the **BBC AQUAMARINE**.

The **BBC AQUAMARINE** is built in 2012 at the Jiangxi – Jangzhou shipyard and is 153.5 mtr in length and 23.2 mtr width. The vessel is equipped with 3 **NMF** cranes, from which 2 located on portside each with SWL 400 ton at 18 mtr distance which cranes can be operated in tandem for heavy lifts.



- more than 150 vessels
- global tramp & liner services
- lifting up to 800 tons
- 28 offices worldwide

**BBC Chartering**  
www.bbc-chartering.com

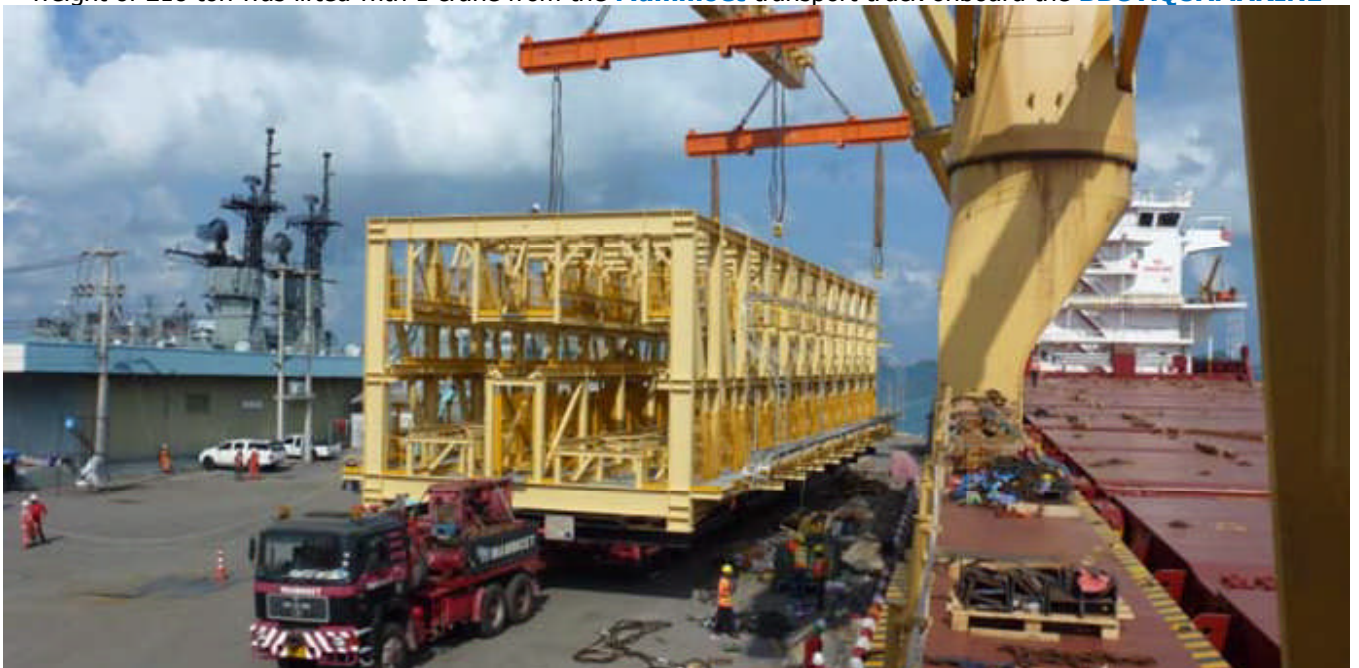
## DAILY COLLECTION OF MARITIME PRESS CLIPPINGS 2013 – 122



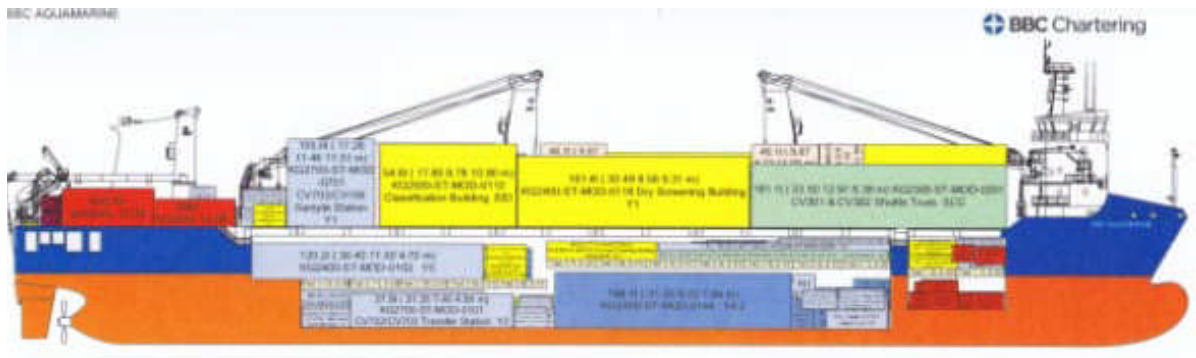
Upon completion of the loading at the tank top and the tween-deck the hatch covers, each with a weight of 51 tons were closed by the ships crew before the start was made to load the deck cargo



Spreader beams were prepared / rigged up in preparation of the large (volume) lift, the 3800 cub mtr piece with a weight of 218 ton was lifted with 1 crane from the **Mammoet** transport truck onboard the **BBC AQUAMARINE**



## DAILY COLLECTION OF MARITIME PRESS CLIPPINGS 2013 – 122



Overview of the cargo loaded onboard the **BBC AQUAMARINE**

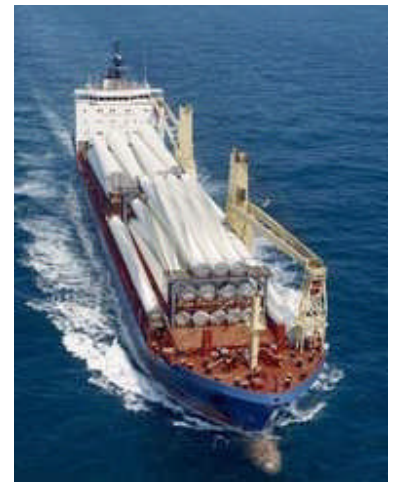


In total distributed over the 6 **BBC** vessels was 450.000 m3 of cargo (abt 200,000 frtons ) loaded for transporation to Port Hedland over the last few months.

**BBC Chartering** owes much of its success to a versatile and powerful fleet of vessels which range from 3,500 dwt to 37,300 dwt, and are capable of lifting cargo up to 800 mts.

**BBC Chartering** operates more than 150 modern, multipurpose heavy lift vessels which comprise one of the largest breakbulk fleets afloat. Because BBC care so much about the

security and reliability of our services, our young fleet averages an impressive five years of age and with its characteristic shallow draft, each vessel is capable of delivering any cargo to any port, including offshore operations. Our adjustable tweendecks optimize our hold to fit cargoes of differing dimensions making each vessel as efficient as possible. **BBC's** mission is to provide a worldwide network of vessels for every breakbulk, heavy lift, project cargo and bulk need. The size and versatility of the fleet ensures the best value for the customers by providing the right vessel for each cargo, while maximizing efficiency and minimizing waste. Click [here](#) for the complete fleetlist

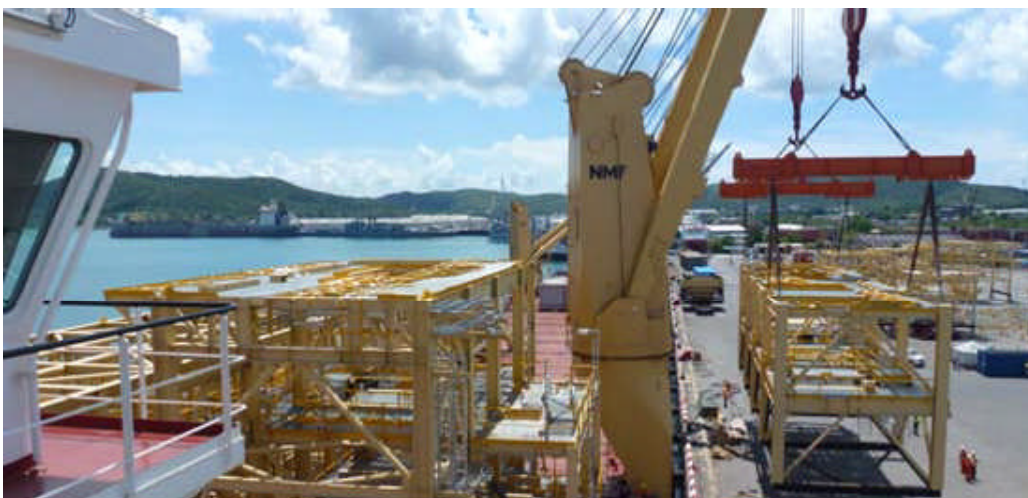


## DAILY COLLECTION OF MARITIME PRESS CLIPPINGS 2013 – 122



The Captain of the **BBC AQUAMARINE** operating the ballast computer at the wheelhouse during the lifts

All photos : Piet Sinke ©



In total the **BBC AQUAMARINE** loaded under supervision of Port Captain **Leif Gehlert** for this trip **35.000 mtr<sup>3</sup>** of project equipment with a total weight of **2780 Mton** and after seafastening the vessel departed last Tuesday from Sattahip for the 7 days trip to Port Hedland (Australia).

**NMT Projects** is a global logistics provider for companies requiring transport of heavy lift,

project-related and oversized cargoes with hands-on approach. **NMT Projects** offers a wide range of specialised services within the niches of the project cargo market, through experienced personnel in our strategically placed offices across the globe. Let **NMT** assist you with your next project transport need...

